

## Utilizing the JNIOR Control Panel

Last updated: November 2, 2020

The following information describes how to utilize the JNIOR Control Panel with the JNIOR.

For additional questions or assistance, email [support@integpg.com](mailto:support@integpg.com).



### Installation and Wiring

The JNIOR Control Panel provides the user with 12 input switches (6 – 2 position switches), 12 LED status indicators and an alarm horn (speaker). The switches, LEDs and sounds are integrated with the JNIOR via the Cinema.jnior program. All functionality is set-up via the software. The JNIOR Control Panel connects to the JNIOR via the Sensor Port along the top edge of the JNIOR, next to the power connector.

The JNIOR Control Panel can be located up to 25 feet away from the JNIOR. INTEG provides a 6 foot connection cable between the JNIOR and JNIOR Control Panel. The user can make a custom cable that is described at the end of this document.

**NOTE:** The green ‘Ready’ LED at the top left of the JNIOR Control Panel will only turn on when the cinema.jnior program is loaded and running on your JNIOR. That is your indication that the software is loaded and READY to use.

### Software

The control panel can be implemented in either the Tasker or Cinema application. These can both be grabbed from our site at [integpg.com](http://integpg.com).

For Cinema, the JNIOR Control Panel requires two items to be configured. The first is to identify the Macro that will be executed each time a switch is pushed and the second is to define the LEDs and sound operation.

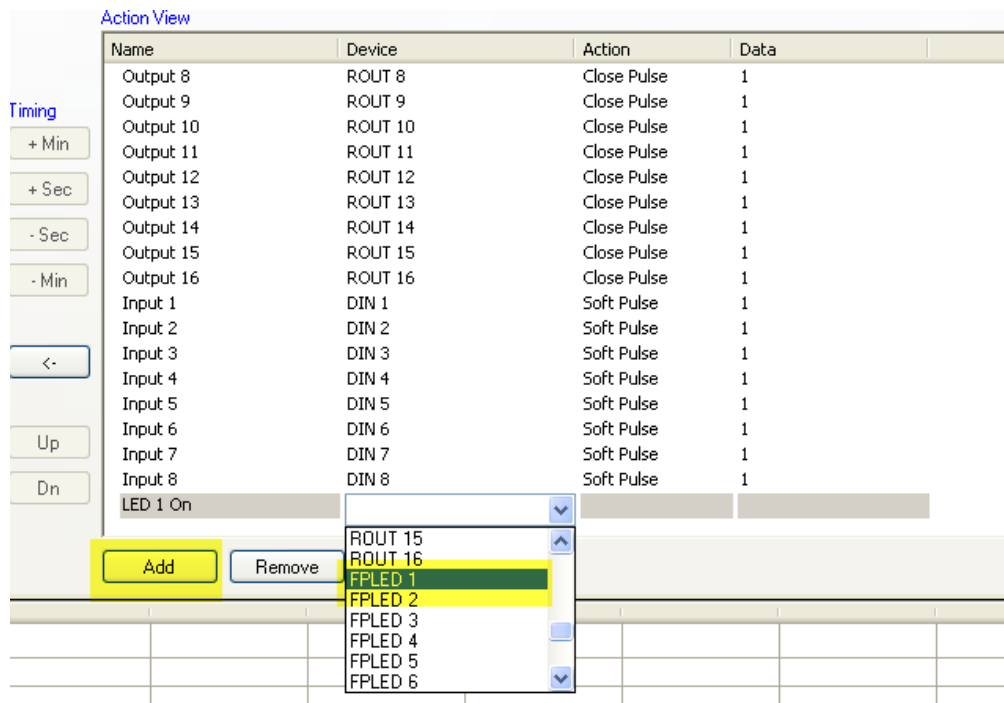
The Macros are configured using the JNIOR Support Tool. A macro can be configured to control outputs on the JNIOR, control the LEDs on the JNIOR Control Panel, control

the sound on the JNIOR Control Panel and communicate with digital projectors, cinema servers and other devices in the theatre.

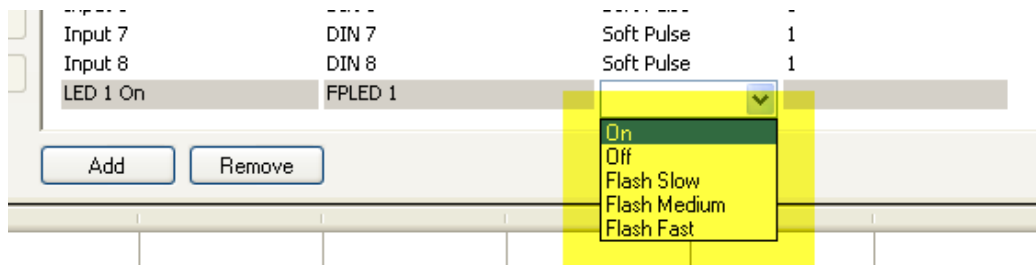
For Tasker, you create a workspace and add a task to it. Once a task is added to the workspace you can then add actions to the task. Actions that can be added to a task are able to control the Control Panel Functionality.

### Control Panel with Cinema

To add the LED Actions, you must click on the Add button, give your action a description (for example, LED 1 On, or Lights High) and select the appropriate LED.



You must then select how you want the LED to operate – On, Off, Flash Slow, Flash Medium or Flash Fast.



With the Flash function (Slow, Medium, Fast) you can add a value in the last column (the data column) that will indicate the number of times the LED should flash. If you leave the data column blank, then the LED will flash until the Off action is received. If you enter a number, the LED will flash that many times.

Up	Input 5	DIN 5	Soft Pulse	1
	Input 6	DIN 6	Soft Pulse	1
	Input 7	DIN 7	Soft Pulse	1
	Input 8	DIN 8	Soft Pulse	1
	New Action 1	FPLED 1	Flash Medium	10

You can continue to Add Actions in the right box for your various LED functions.

### Control Panel Sounds

Dn	Input 7	DIN 7	Soft Pulse	1
	Input 8	DIN 8	Soft Pulse	1
	New Action 1			

- FPLED 8
- FPLED 9
- FPLED 10
- FPLED 11
- FPLED 12
- FPSOUND**
- CINEMA\_SERVER\_CLIENT
- PRESHOW\_CLIENT

Dn	Input 7	DIN 7	Soft Pulse	1
	Input 8	DIN 8	Soft Pulse	1
	New Action 1	FPSOUND		

- Play Sound
- Soft Alarm
- Medium Alarm
- Loud Alarm
- Custom Alarm
- Silence Alarm

**Play Sound** – this will play a ‘raw’ sound file that is stored in the JNIOR Control Panel. The Control Panel includes one sample called Sound3.raw. INTEG will be providing more updates and information related to this feature. With the current software release, you can put 3 in the data column and this Action will then play the Sound3.raw file when the macro is executed. This feature is being developed should the user have their own sounds they would like to use.

Soft Alarm, Medium Alarm and Loud Alarm – these actions will play a predefined sound according to the following format:

Duration    Time (seconds)    Percent Loud

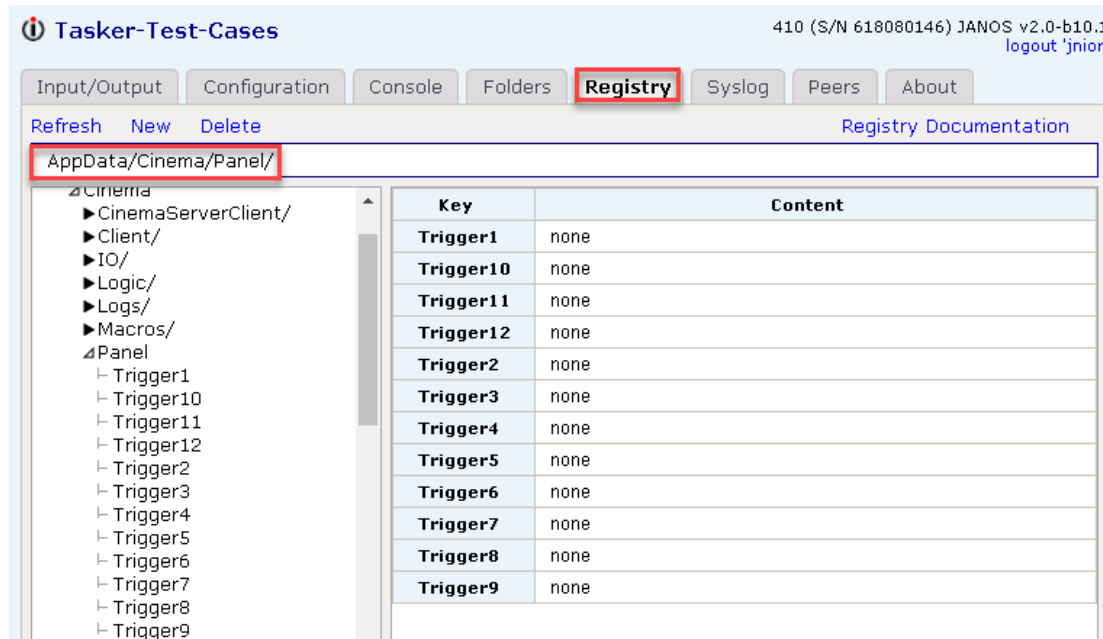
The Soft Alarm uses a setting of 500 3 25 which means the alarm will be on for 500 milliseconds per second for 3 seconds total at 25% of total volume.

After you have added the Actions (and you can add more as you need them), you can build your macros that utilize the LEDs and sounds. Below is a sample macro called Test.



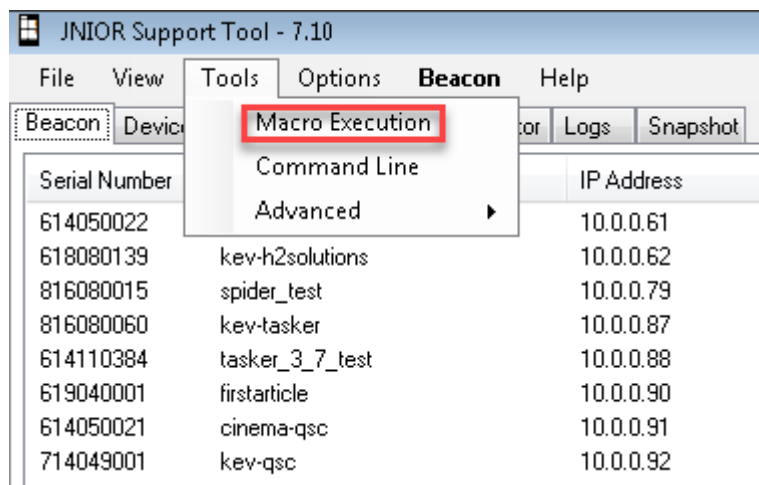
## Control Panel Pushbuttons

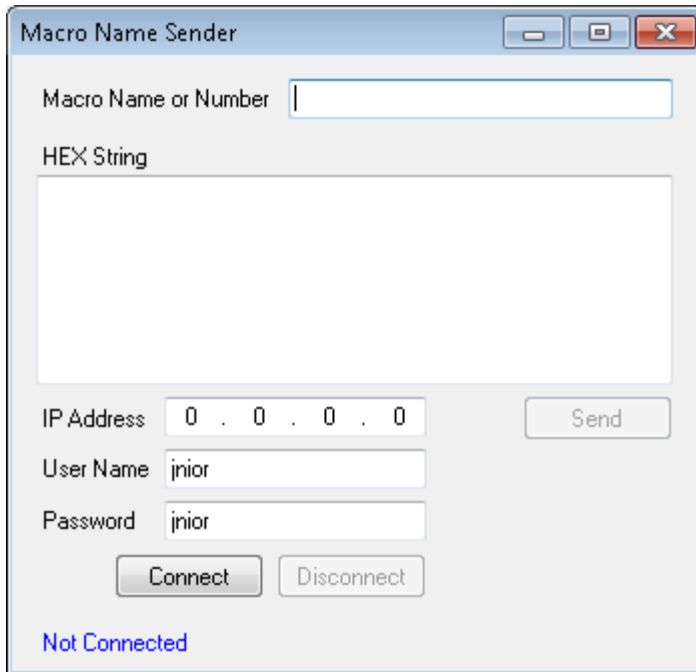
To trigger your macro using the JNIOR Control Panel pushbuttons, you must go the Registry tab on the JNIOR WebUI and go to the AppData/Cinema/Panel. There are 12 Registry Keys, one for each input switch. Edit the key that you want to trigger your macro when the input switch is pushed. Enter your macro name in the Registry Key value.



**NOTE:** After you have completed your macros, you must Publish them to your JNIOR. And after you have modified any Registry Keys for Cinema, you must reboot your JNIOR for the new macros and settings to become effective. Please consult the Cinema.jar manual and JNIOR Support Tool manual for more details.

For testing purposes, you can also use the Macro Execution tool that is part of the JNIOR Support Tool.



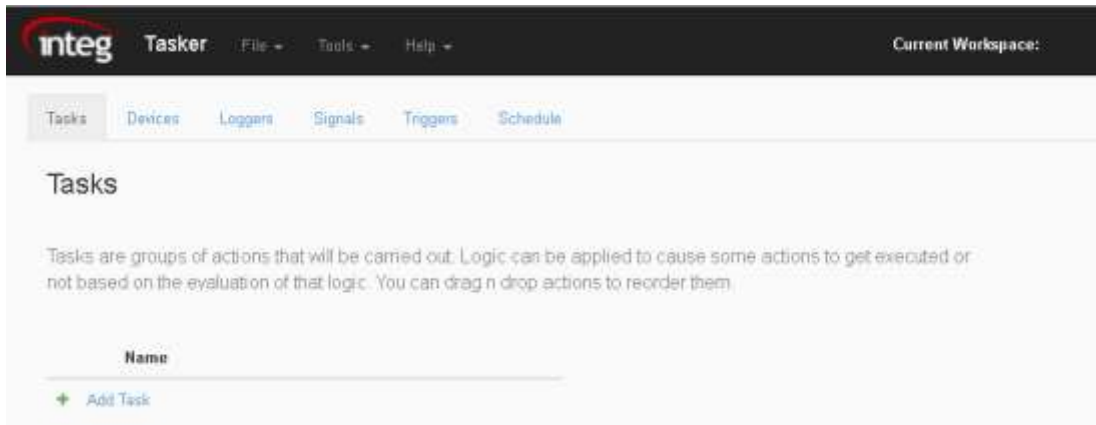


The image shows a Windows-style dialog box titled "Macro Name Sender". It has a standard title bar with minimize, maximize, and close buttons. The dialog contains the following fields and controls:

- A text input field labeled "Macro Name or Number" with a cursor inside.
- A large text area labeled "HEX String".
- An "IP Address" field with the value "0 . 0 . 0 . 0".
- A "User Name" field with the value "jnior".
- A "Password" field with the value "jnior".
- A "Send" button.
- "Connect" and "Disconnect" buttons.
- A status label at the bottom left that says "Not Connected" in blue text.

## Control Panel with Tasker

To set Tasker to control the Control Panel, you'll need to access the Tasker web page. From there you'll create a new workspace, and a Task to it.



The image shows the Tasker web application interface. At the top is a dark header bar with the "integ Tasker" logo, navigation links for "File", "Tools", and "Help", and a "Current Workspace:" label. Below the header is a horizontal menu with tabs: "Tasks", "Devices", "Loggers", "Signals", "Triggers", and "Schedule". The "Tasks" tab is selected. The main content area is titled "Tasks" and contains a descriptive paragraph: "Tasks are groups of actions that will be carried out. Logic can be applied to cause some actions to get executed or not based on the evaluation of that logic. You can drag n drop actions to reorder them." Below this text is a "Name" input field and a green "+ Add Task" button.

What is the name of the new Task?

Cancel

Add

Once the new Task is added to the Workspace, actions can be added to the Task. Here we'll be able to add control panel actions to the workspace. The control panel actions available in Tasker are setting the LED lights, activating the alarm, and silencing the alarm.

**Control Panel**

Set LED ( channel, state )    Play Alarm ( volume, duration )    Silence Alarm ( )

After adding one or multiple control panel actions and setting the values for the actions, hitting the play button on the task will activate the control panel actions. These actions in the Tasker can also be hooked up to triggers and schedules in Tasker so the Task doesn't have to be directly activated in the Task tab alone.

## Sensor Port Cable

The JNIOR Control Panel can be located up to 50 feet from the JNIOR. In these instances, the user must make a custom cable to connect the control panel with the JNIOR. The pin out for the cable that connects the Sensor Port on the JNIOR with the control panel is the same on both ends. The connector is a standard RJ-12 connector on both ends. The cable is a standard 6-conductor, flat telephone cable.

**Note:**

*An RJ12 connector is the same size as an RJ11 connector except all 6 pins have copper pads to connect all 6 wires to the port.*

*Please make sure that you orient the pins properly for each side of the cable. **The cable will be twisted (or the one RJ12 connector will be upside down from the other) so that when you hold both ends of the cable side by side, the pin numbers will match.** Please contact INTEG Process Group with any questions.*

Sensor Port Pin-Outs – Use a 6 conductor wire and connect each colored wire to the same pin number on each connector.

<u>Pin</u>	<u>Description</u>
1	Voltage (5V Vcc)
2	GND
3	1-WIO (1-Wire Data)
4	GND (1-Wire Return)
5	NC (No Connection internally to the Expansion Module)
6	Unregulated DC

Reference the following diagrams to determine the proper pin numbers of the connectors:

